

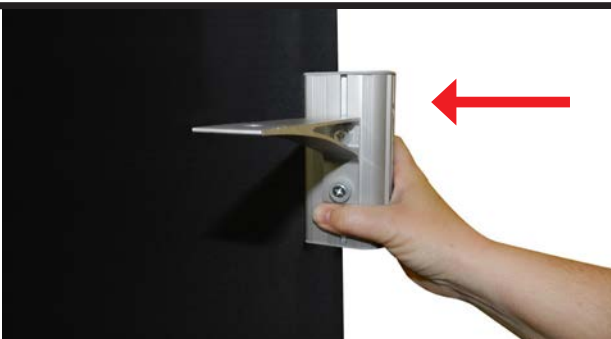
INSTRUCTIONS

Wooden Shelves with Brackets for Slim Line Steel Base Banners



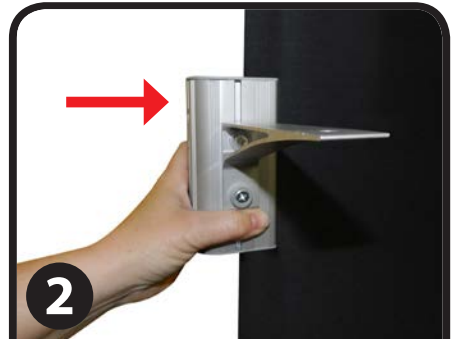
Includes:
Shelf
2 Shelf Brackets
2 Thumbscrews

1



Attach bracket (with flat ledge facing up) onto one side of your assembled Slim Line Banner by firmly pushing the top of the bracket until it clamps onto the banner. Push the bottom of the bracket until bracket is fully attached.

2



On the opposite side, attach the second bracket in the same manner. Make sure both brackets are placed at the same height.

3



Lay shelf on top of bracket ledges, lining up the holes in the brackets with the holes on the underside of the shelf.

4



Insert thumbscrew through bracket ledge and shelf. Tighten to hold in place. Repeat on opposite side.



No more than two shelves are recommended for an individual Slim Line Steel Base Banner. We also recommend the shelves be placed mid-height and/or lower on the display for better balance.